

Who could love the Nightingale?

The time is 1971. The places are Sydney, Melbourne and the tract of land between the Murray and Murrumbidgee Rivers.

This is a novel about personality and how it's shaped by place and period. It is also a novel of poignant human relationships: Edward Le Rossignol, the nightingale who won't allow his personality to be squashed flat and dull. Margaret Ward, a young art teacher who has yet to develop her own personality remote from her wealthy family and associates, turns to Edward.

Their affair develops gradually - not a love relationship in the ordinary sense of the word, but an elaborate, intricate involvement. As their awareness of each other grows, the reader is carried along, not merely as observer but as participant, committed to the characters. We become aware of a richly inflected medium, full of cross references, conveying the inner and outer lives of the characters who gain their full reality and stature at the moment of leaving the action, rather like a piece of music which is completed not by the last sounds but by the echoes and reverberations left in the mind.

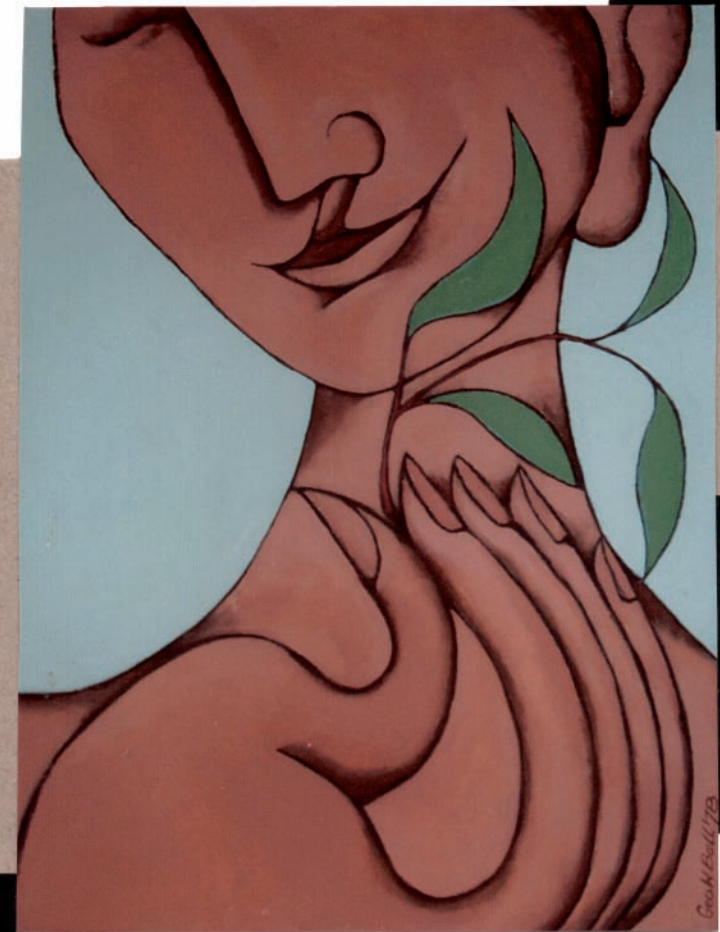
Design by Vane Lindesay

Chester
Eagle

Who could love the Nightingale?



Who could love the Nightingale?



Chester Eagle